

Summary

The purpose of this document is to detail the updates incorporated into the Platinum 6.1 Patch 138 release. Please note that Platinum 6.1 is only compatible with Windows 10.

Contents

Products Affected	2
Detailed Description: Platinum 6.1 Patch 138	2
Features and Updates	3
Gel Alignment	3
New Methods File	6
New Gels File	7
Improvement to used reagent logging (CEP058)	7
Limitations	8
Contact	9

Products Affected

800001 Platinum Analysis Software

Detailed Description: Platinum 6.1 Patch 138

Platinum 6.1 software is the interface between the V8, and/or a gel scanner, and the user. It allows for complete management, analysis and interpretation of results and it provides a comprehensive set of analytical tools, editing tools and reporting tools for analysing and reporting data.

Platinum 6.1 Patch 138 is designed to provide updates and additional functionality. As Platinum 6.1 is the operating software of the V8 and an analytical software package, there are many amendments and modifications to the software expected as we continue to improve and develop the instrument and the assays on-board. As such we have scheduled release dates for Platinum upgrades, which incorporate prioritised software fixes/solutions and features. Scheduling the release of the software upgrades allows Helena Biosciences Europe to ensure as many fixes and features are incorporated into one upgrade, thus minimising the disruption this can cause to systems in the field and reducing the number of upgrades required. The release dates of these patches are prioritised. All scheduled releases are extensively verified and must pass regression testing before being released.

This patch is only compatible with Platinum 6.0.222 and above.

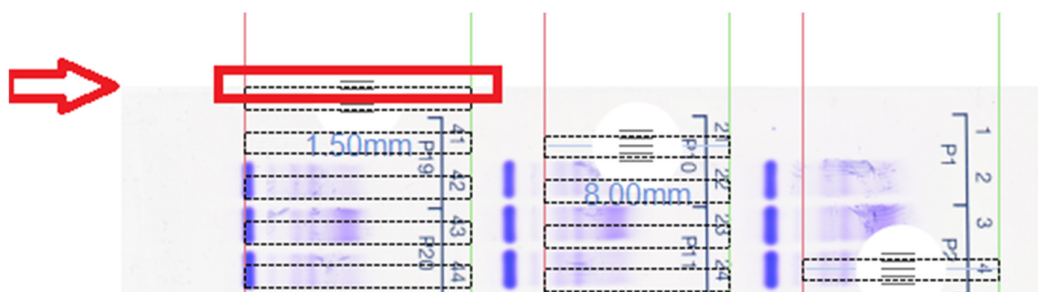
Features and Updates

Update	Description
Gel alignment	Improved gel alignment settings to increase flexibility of marker movement within the gel area (CEP055).
Methods File	New Methods.gel file (MF1019) with updated gel alignment settings.
Gels File	New Gels.gel file (GF1012) with updated gel alignment settings.
Used Reagent Logging	Improvement to used reagent logging (CEP058).

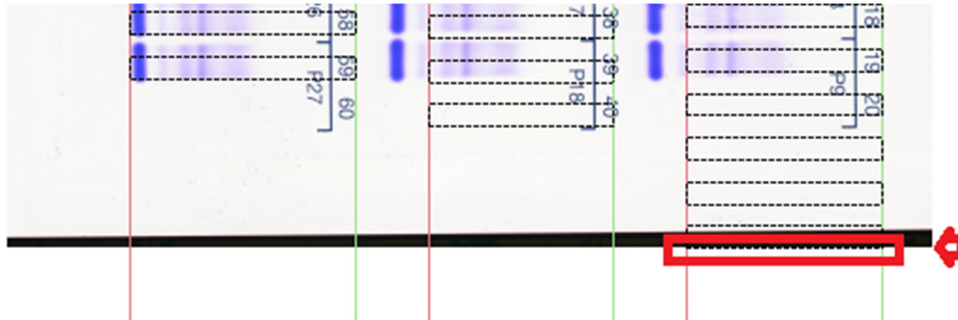
Gel Alignment

All lane position restrictions have been removed, except for the limit that the lane markers (Red, Green, and Blue lines) must stay within the boundaries of the image.

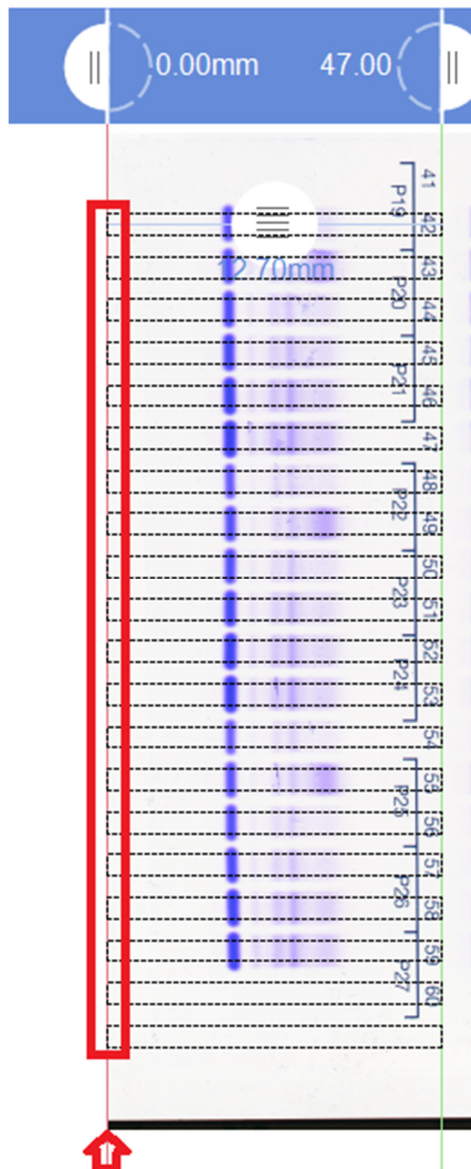
The maximum a column can be moved up is for the first sample in the column to be in line with the top edge of the scanned image:



The maximum a column can be moved down is for the last sample in the column to be in line with the bottom edge of the scanned image:

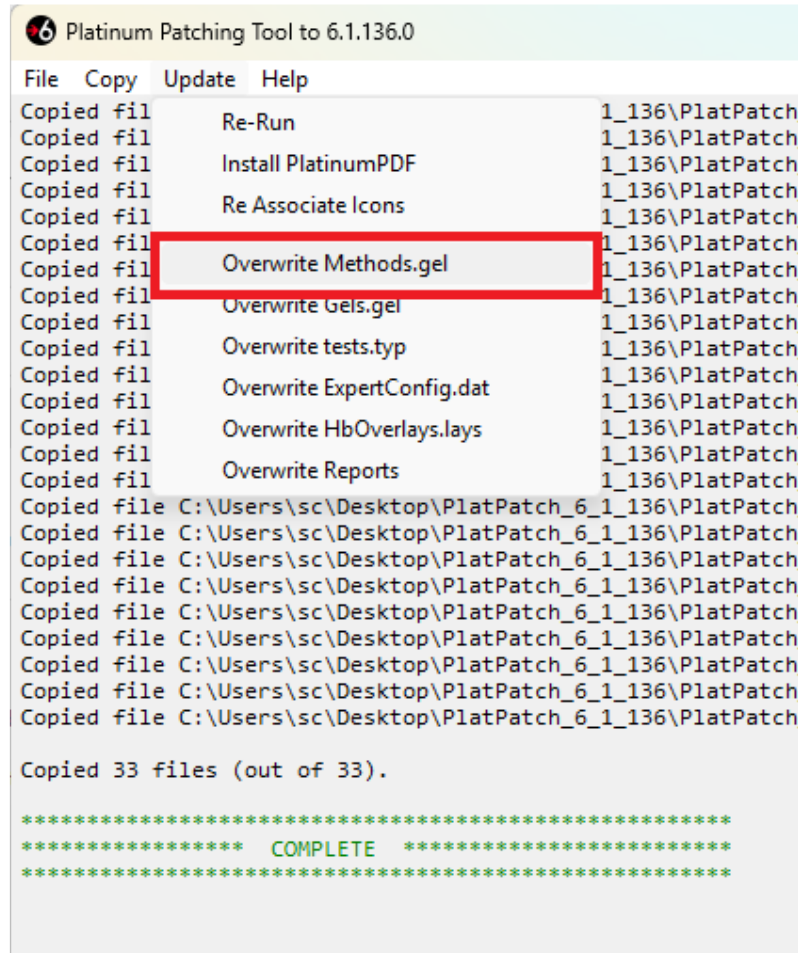


The maximum the left and right markers (red and green) can move to the left is in line with the left edge of the image:



New Methods File

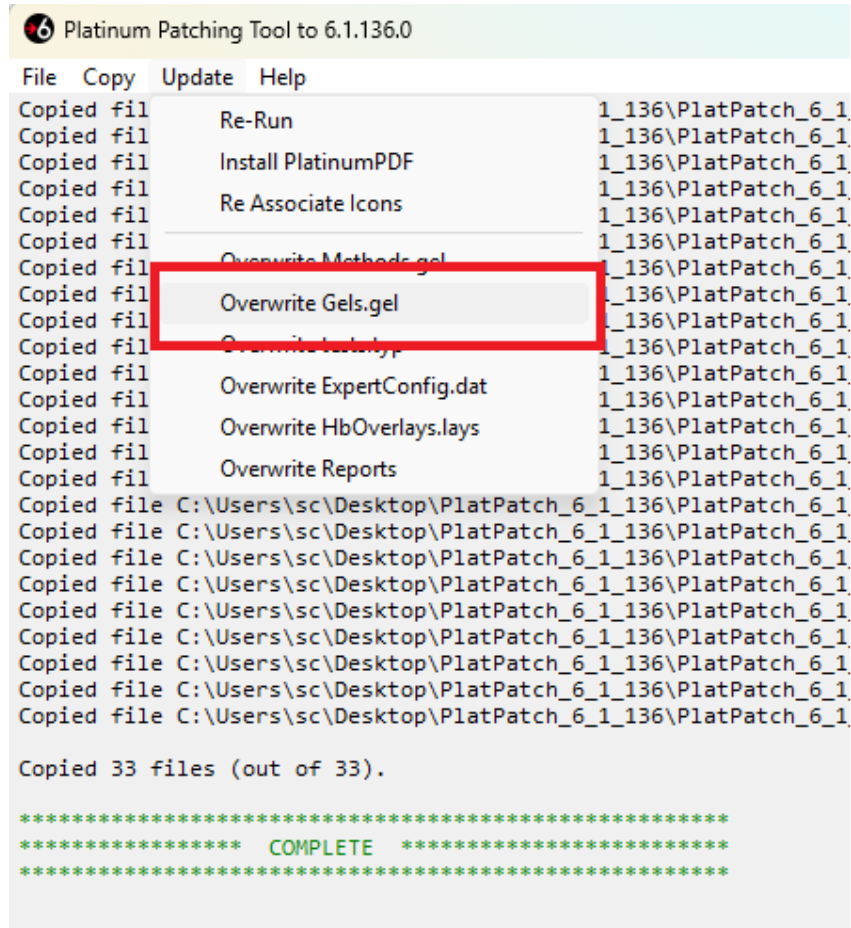
New methods file MF1019 can now be updated through the patching tool. To do this, run the patching tool and before closing the window go to **Update > Overwrite Methods.gel**.



Please contact Support if you have a bespoke methods for assistance in incorporating these updates.

New Gels File

New gels file GF1012 can now be updated through the patching tool. To do this, run the patching tool and before closing the window go to **Update > Overwrite Gels.gel**.



Improvement to used reagent logging (CEP058)

Previously, when a reflex test was performed, Platinum would update original runs with any newly added buffers as 'used' liquids in the run (text of the used liquids are shown in bold). It would also log all antisera against all runs in an SP-ID:

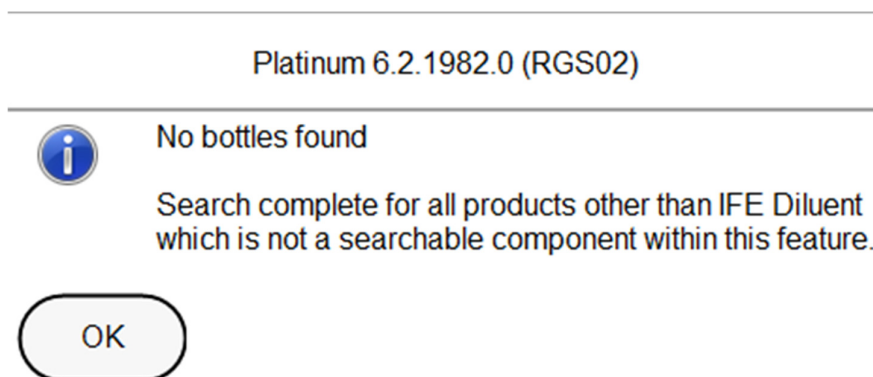
Barcode	Reagent 1	Reagent 2	Reagent 3	Reagent 4	Reagent 5	Reagent 6	Reagent 7	Reagent 8	Reagent 9	Reagent 10
6A403B03B4B55272	6A403B03B4B55272	6A403B03B4B55272	6A403B03B4B55272	6A403B03B4B55272	6A403B03B4B55272	6A403B03B4B55272	6A403B03B4B55272	6A403B03B4B55272	6A403B03B4B55272	6A403B03B4B55272
Name	Serum Protein Diluent	Serum Protein Diluent	IFE Diluent (Gel)	none	IgG (Green)	IgA (Red)	IgM (Blue)	A4FAGPAUCB	RTDVB8D859	none
Expiry Date	0426	0426	1027	0101	0327	0427	0427	0427	0427	0101
Lot	11990795	11990795	10	0	12	28	18	7	9	0
Nr. in batch	541	542	83	0	315	97	158	47	404	0
Nr. of tests	200	200	600	0	50	50	50	50	50	0
Cap. Opened on	03/06/2025	04/06/2025	04/06/2025	n/a	04/06/2025	04/06/2025	04/06/2025	04/06/2025	04/06/2025	n/a
Open Stability (days left)	181	182	n/a	n/a	28	28	28	28	28	n/a

Now, used liquid logging is more accurate by showing only the liquids used for the sample run in bold. Platinum will not retrospectively add newly added liquids to previous runs. It will also not update newer runs with liquids used in older runs.

This does not affect the logging of the onboard containers, all reagents onboard will still be displayed as previously.

All 'used' (highlighted) reagents and buffers for capillary electrophoresis are searchable using the Reagent Search function (*Configure > Reagent Search*).

For gel tray preparation, used reagents will be highlighted, however, **they will not be searchable via the Reagent Search:**



Limitations

Changes to LIMS settings are tested to the best of our ability, however, we cannot be held liable for any changes that may be required to the software, or any laboratory software, used for LIMS integration as a result of this update.

Platinum PDF should only be used via the 'Print to Platinum PDF' functions within the Platinum 6.1 software and should never be set as the default printer. Alternate PDF creators are not recommended for use within Platinum.

This patch has been tested internally by Helena Biosciences Europe to ensure the core functionality is as expected, however, user specific usage cannot be reviewed. A review of the new features outlined in this document and local change control/verification of Platinum performance should be carried out to ensure continuity of performance.

The following new operator manuals are available as downloads from the Helena Biosciences Europe website:

- HL-2-P-2219-EN Rev.8 800008 / 800018 V8 Operator Manual
- HL-2-P-3308-EN Rev.7 Platinum Touchscreen Manual
- HL-2-P-2705-EN Rev.5 Platinum Gel Operator Manual

Please go to <https://www.helena-biosciences.com/documentation> and sign in using the password: **Q34fg8Xr**.

Contact

Please contact Technical Support (support@helena-biosciences.com) for further details.